

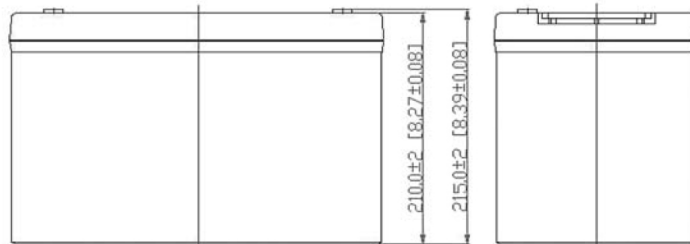
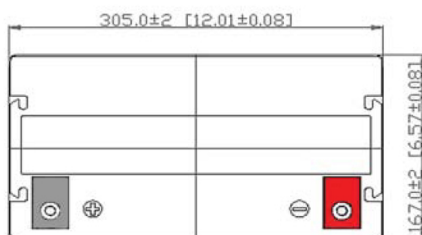
Capacity (25°C)	20HR (5.29A, 10.5V) = 105.80AH 10HR (10.20A, 10.5V) = 102.0AH 5HR (17.90A, 10.5V) = 89.50AH 1HR (56.91A, 10.5V) = 56.91AH
Operating Temperature Range	Charge = 0°C to 45°C Discharge = -15°C to 50°C Storage = -15°C to 40°C
Approx. Weight	29.0Kg
Internal Resistance	Fully charged at 25°C : ≤ 5.0mΩ
Self Discharge	2% per month at (25°C)
Capacity Affected by Temp. (20HR)	40°C = 102% 25°C = 100% 0°C = 85% -15°C = 65%
Charge Voltage (25°C)	Cycle Use = 14.4-14.7V (-4/mV/°C) Max Current = 30A Float Use = 13.5-13.8V (-3mV/°C)
Dimensions (Nominal)	Length: 305mm (12.01 in.) Width: 167mm (6.57 in.) Height: 210mm (8.27 in.) Total Height: 215mm (8.39 in.)

- Completely sealed, maintenance-free, low self-discharge
- State of the art AGM and grid alloy formula technology
- Non-spillable, stable quality and high reliability with excellent re-charging performance
- Floating and standby use up to: 10 years
- Cycle use: Up to 260 cycles at 100% DoD
- Cycle use : Up to 500 Cycles at 50% DoD
- Container and Cover Material – ABS UL94-HB (optional UL94-V0)
- Transportation - D.O.T., I.A.T.A. & F.A.A.



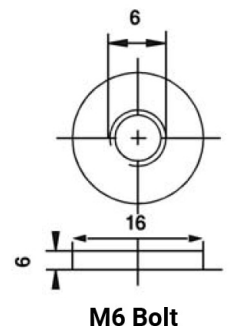
■ APPLICATIONS

- | | | |
|---------------------------|------------------------------------|----------------------------------|
| Multipurpose | Alarm & Security System | DC Power Supply |
| Telecommunications | Comm. Power Supply | Auto Control System |
| UPS | Elec. Power System (EPS) | Traffic Control Signaling |
| Medical Equipment | Emergency Backup Power | Emergency Lighting |

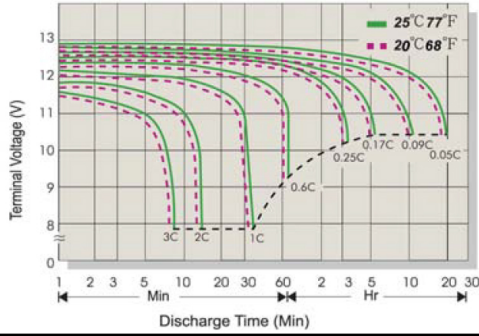


Terminal Type

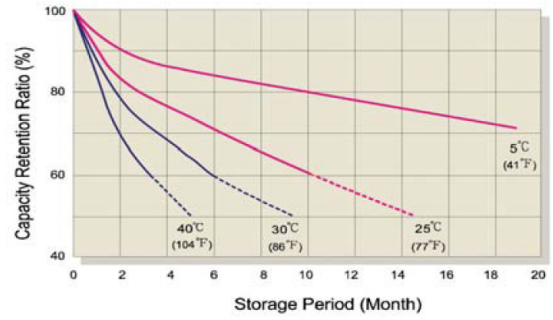
- Terminal M



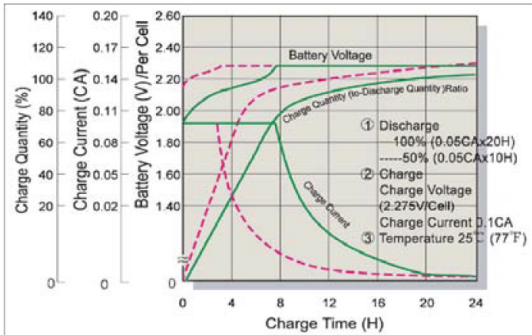
Terminal Voltage (V) & Discharge Time



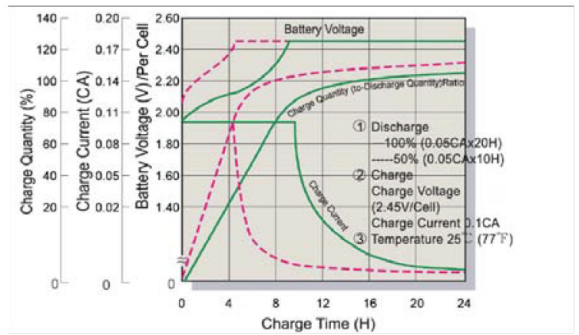
Capacity Retention Characteristic



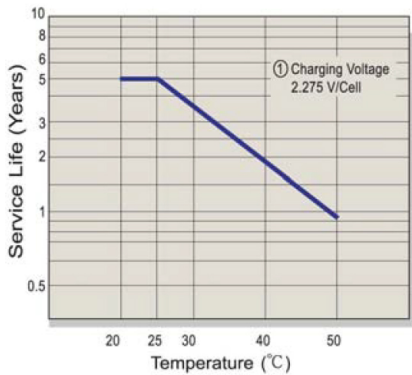
Battery Voltage & Charge Time For Standby Use



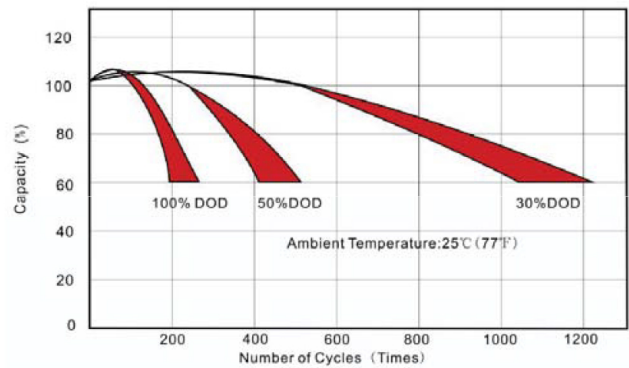
Battery Voltage & Charge Time for Cycle Use



Float Service Life



Cycle Service Life



Constant Current Discharge (A) at 25°C (77°F)

F.V/Time	10min	15min	30min	1h	2h	3h	4h	5h	6h	10h	20h
1.60V	243.2	181.3	104.9	61.6	37.3	27.4	22.2	18.8	12.5	10.7	5.47
1.65V	235.9	176.5	102.6	60.4	36.7	27.0	21.9	18.5	12.4	10.6	5.42
1.70V	226.4	170.3	99.6	58.9	36.0	26.5	21.6	18.3	12.2	10.4	5.36
1.75V	214.1	162.2	95.6	56.9	35.0	25.9	21.1	17.9	12.0	10.2	5.29
1.80V	198.4	151.7	90.4	54.3	33.8	25.0	20.4	17.4	11.7	10.0	5.18
1.85V	178.8	138.5	83.8	51.0	32.1	23.9	19.6	16.7	11.3	9.69	5.05

Constant Power Discharge (W) at 25°C (77°F)

F.V/Time	10min	15min	30min	1h	2h	3h	4h	5h	6h	10h	20h
1.60V	321.7	193.4	116.9	71.7	53.0	43.3	36.7	24.8	21.3	10.9	9.30
1.65V	319.9	192.0	115.9	71.1	52.7	43.0	36.5	24.7	21.1	10.9	9.50
1.70V	311.2	187.3	113.4	70.0	51.8	42.4	36.0	24.4	20.9	10.8	9.60
1.75V	300.7	181.7	110.1	68.4	50.8	41.6	35.3	24.0	20.5	10.6	9.69
1.80V	285.3	173.6	105.6	66.3	49.3	40.4	34.5	23.4	20.1	10.4	9.79
1.85V	337.5	264.1	162.5	99.8	63.4	47.4	38.9	33.2	22.7	19.47	10.2